



*Cruise, Explore & Dive The Palau Islands*  
**PALAU-MICRONESIA**

Depart: 29 March 2025 | Return : 13 April 2025  
from \$8,153 Diver - Ex Brisbane



- Return flights ex. Brisbane to Palau with Qantas Airlines (subject to change until ticketed) (30kg check in luggage allowance)
- Australian departure and applicable airline taxes



- Return airport transfers in Palau
- 3 nights twin share accommodation Palau Central Hotel - standard room.



- 7 nights twin share accommodation aboard The Palau Siren
- 5 nights twin share accommodation Cove Resort Palau (Marine Blue Bay room)



- Up to 4 dives / day whilst aboard the **SY Palau Siren** (except for the day of arrival & departure)
- Tanks, weights, belts and dive guide services



- Breakfast at Palau Central Hotel
- Tea, coffee, juices, soft drinks and water & all meals whilst aboard the SY Palau Siren
- Breakfast at Cove Resort Palau

**Price does not include**

- Passport & Visa Fee's, Travel insurance,
- Personal spending money , Gratuities - Tips
- Marine Park and Port Fees USD 230 - payable directly in Palau
- Palau departure tax \$50.00 USD per person

**Booking conditions and requirements:**

To secure your place on this trip, please complete an online booking form and return it together with a deposit amount of \$2500 pp.

**Note:** Additional payment instalments will be required throughout the duration of the booking, details will be confirmed at the time of booking confirmation.

Package subject to change at any time due to supplier rate changes and currency exchange rates.

See other terms & conditions as per the Dive Adventures website  
[www.diveadventures.com.au](http://www.diveadventures.com.au)



**SCAN ME**



**Tweed Sea Sports**  
33 Machinery Drive, Tweed Heads South, NSW 2486  
Ph: 07 5524 3683  
[www.tweedseasports.com](http://www.tweedseasports.com)

Booking Reference : #S 28639 Date : 15/11/2024



[www.diveadventures.com.au](http://www.diveadventures.com.au)



# PALAU MICRONESIA

## The Ultimate Liveaboard Adventure

Cruise, Explore & Dive The Rock Islands of Palau

Ex Brisbane from **\$8153**

## Special Group Departure

29 March - 13 April 2025

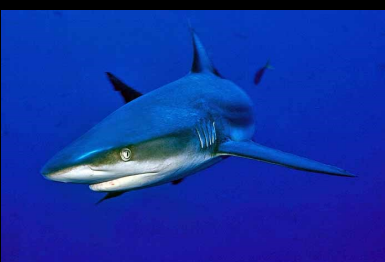


Join us on the voyage of a lifetime aboard the beautiful Palau Siren to the remote and pristine reefs of Palau.

The coral reefs of Palau feature spectacular corals and abound with large fish, rays and shark populations.

Macro life is abundant, jelly fish lake is extraordinary and Japanese wrecks provide a time capsule of WW II history.

Note - Conditions apply



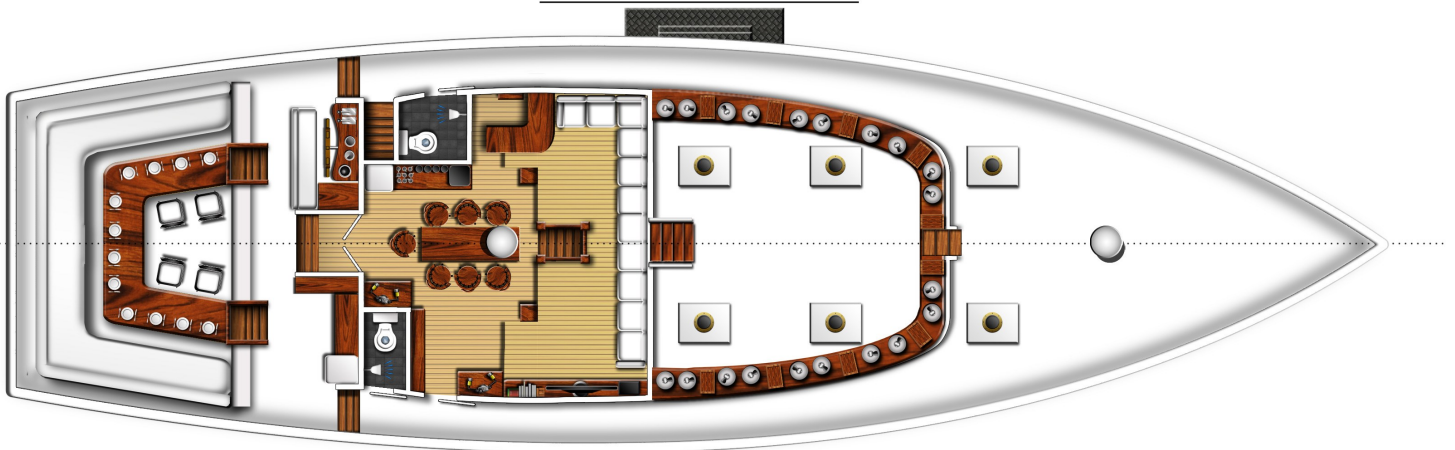




*Palau Siren*

# MICRONESIA-PALAU

SY PA Siren



Upper Deck



Lower Accomodation Deck

0M 5M 10M 15M 20M 25M 30M 35M 40M



**Tweed Sea Sports**  
 33 Machinery Drive, Tweed Heads South, NSW 2486  
 Ph: 07 5524 3683  
[www.tweedseasports.com](http://www.tweedseasports.com)

Booking Reference : #S 28639 Date : 19/07/2024



[www.diveadventures.com.au](http://www.diveadventures.com.au)





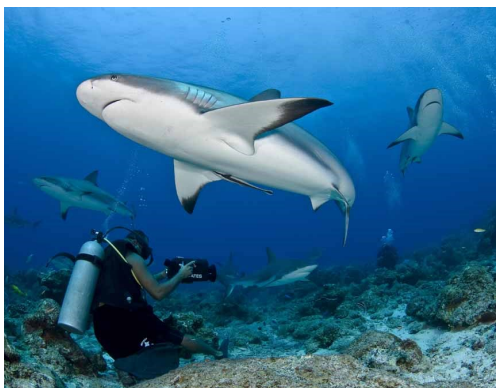
*Cruise, Explore & Dive The Palau Islands*

# PALAU-MICRONESIA

Tour Leader - Peter



Palau is world-renowned for its marine biodiversity and an abundance of large pelagic animals. The area offers avid wreck divers one of Micronesia's most extensive collections of WWII shipwrecks. From current swept plateaus to sheltered coral gardens, you will find an incredible range of diving for every level of interest and skill. The majority of diving is drift diving along the walls, plateaus and coral gardens of the outer reef, with the dive boat following along from the surface to meet you upon ascent.



Before and during WWII, Palau became a significant tactical advantage to the Japanese war effort. Subsequently, the American Navy launched operation 'DESECRATE I' on March 31, 1944, resulting in more than 60 ships being sunk. The wrecks rest at depths ranging from 20m to 40m.



Experience the sites that make Palau one of the top dive destinations in the world: the sharks of Blue Corner, the manta rays of Devilfish City and German Channel, and the coral reefs and stunning drop-offs teeming with marine life. This 10 night liveaboard adventure provides a mix of wreck diving, drift diving and night dives. Departing from Koror, the S/Y Palau Siren will dive the wrecks around Koror harbour before cruising to Ulong Channel and the Rock Islands and Ngerchu - for some speedy drift dives and Peleliu Island. Many of the channels have strong currents and reef hooks are an essential piece of diving equipment, however diving here is suitable for all levels of experience.



**Tweed Sea Sports**  
33 Machinery Drive, Tweed Heads South, NSW 2486  
Ph: 07 5524 3683  
[www.tweedseasports.com](http://www.tweedseasports.com)

Booking Reference : #S28639 Date : 19/072024



[www.diveadventures.com.au](http://www.diveadventures.com.au)